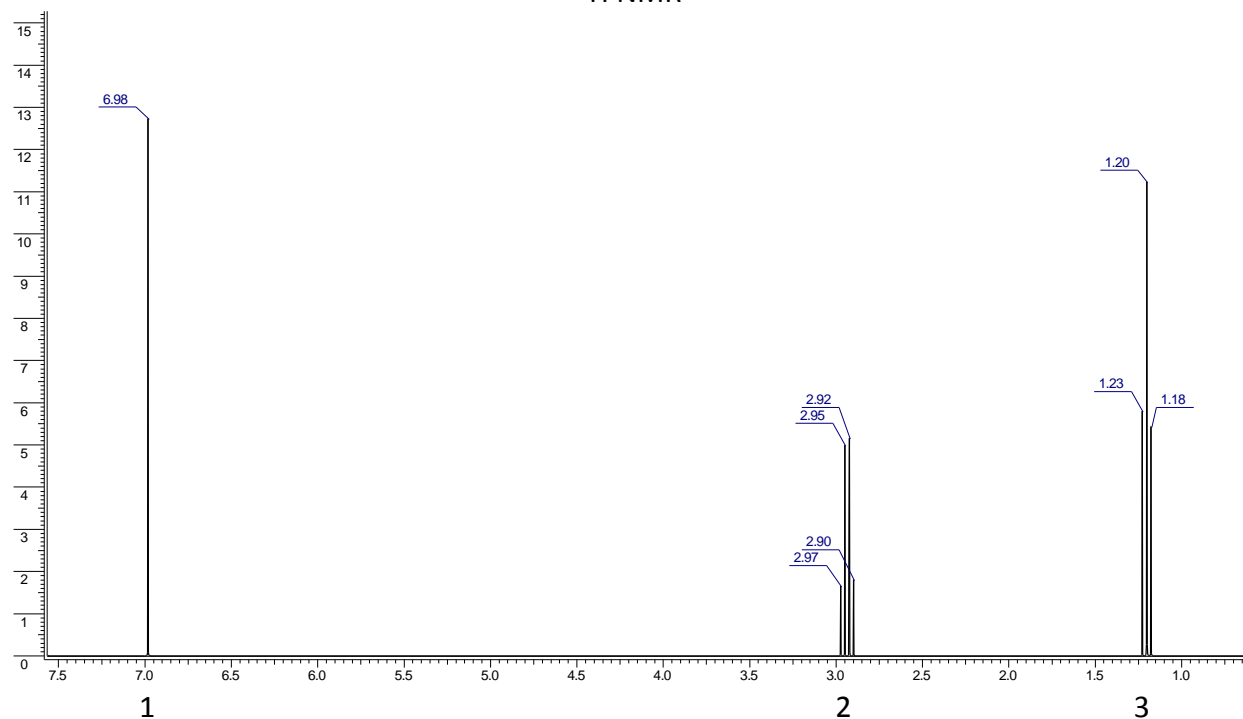


MS (m/z): [M]⁺ 180(100%), [M+1]⁺ 181(11.1%), [M+2]⁺ 182(1.1%)
IR (cm⁻¹): 3010(m), 2957(m,br), 1688(s), 1677(s), 1612(m), 1591(m), 1228(s), 1149(s)

¹H NMR



¹³C{¹H} NMR

