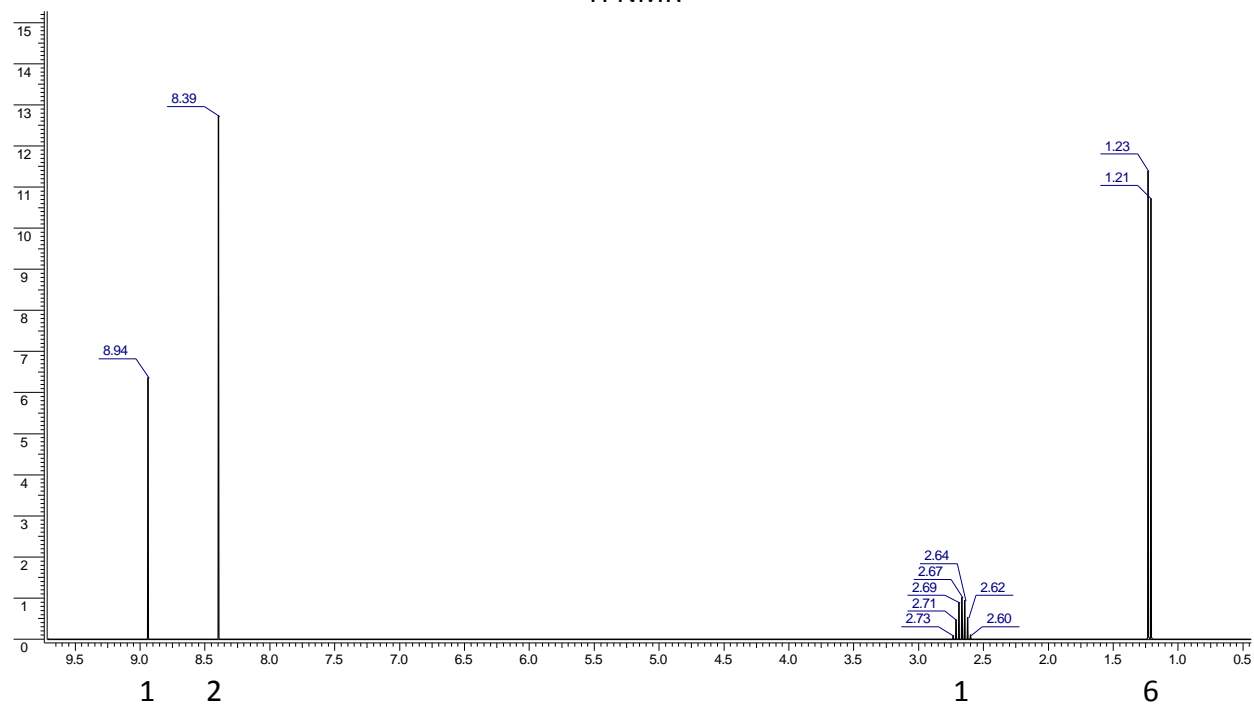


MS (m/z): [M]⁺ 234(100%), [M+1]⁺ 235(12.9%), [M+2]⁺ 236(1.5%)
IR (cm⁻¹): 3007(m), 2980(m,br), 2184(w), 1562(vs), 1490(vs), 1333(vs), 1364(vs)

¹H NMR



¹³C{¹H} NMR

