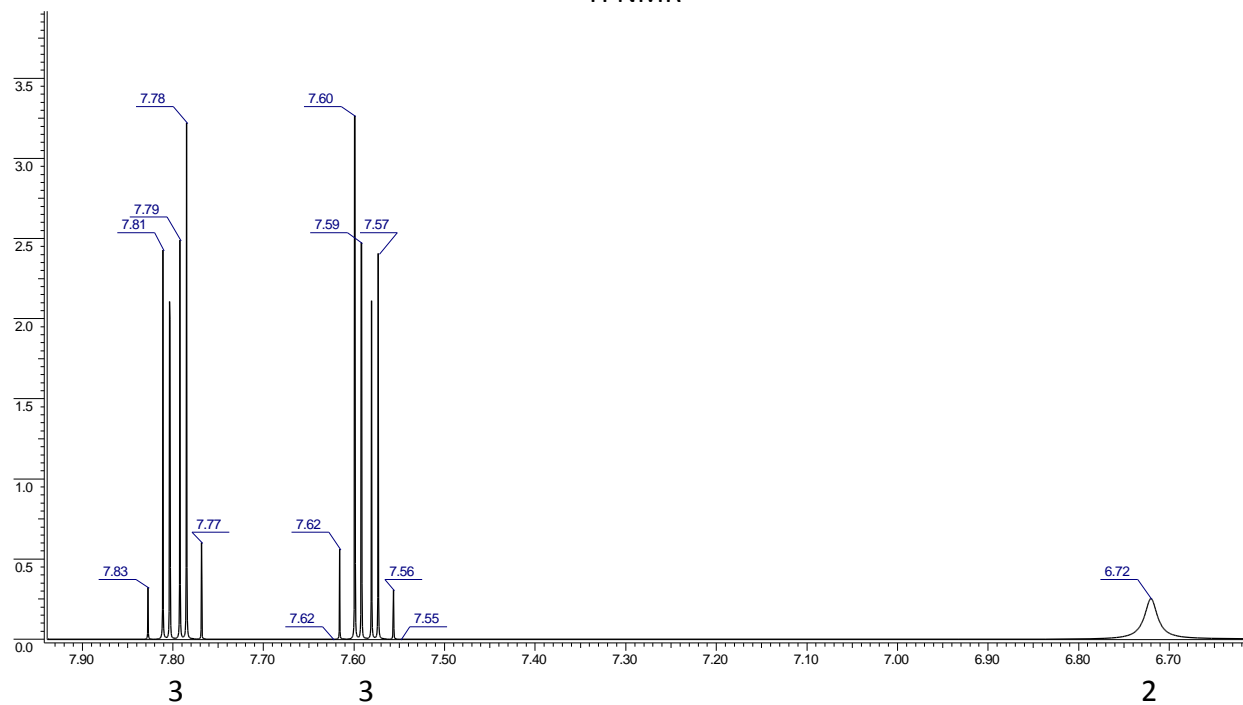


MS (m/z): [M]<sup>+</sup> 166(100%), [M+1]<sup>+</sup> 167(8.9%), [M+2]<sup>+</sup> 168(1.1%)  
IR (cm<sup>-1</sup>): 3638(s,br), 3096(m), 1750(vs), 1759(vs)

### <sup>1</sup>H NMR



### <sup>13</sup>C{<sup>1</sup>H} NMR

