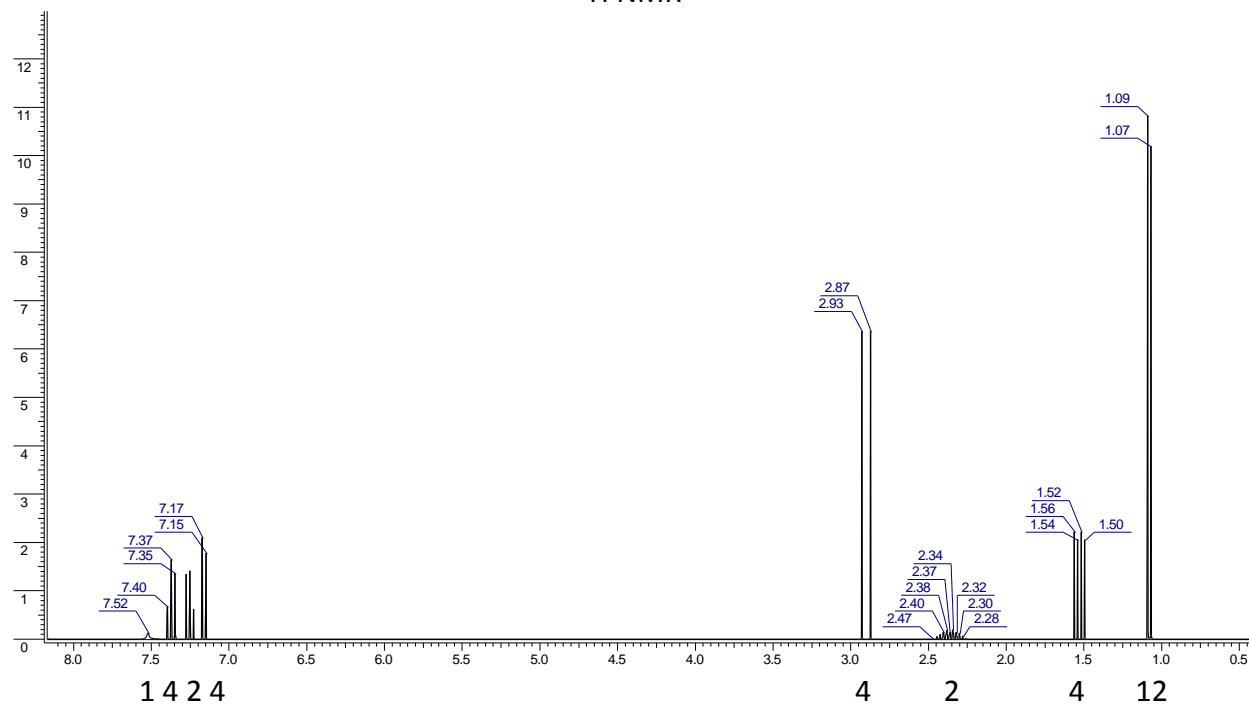
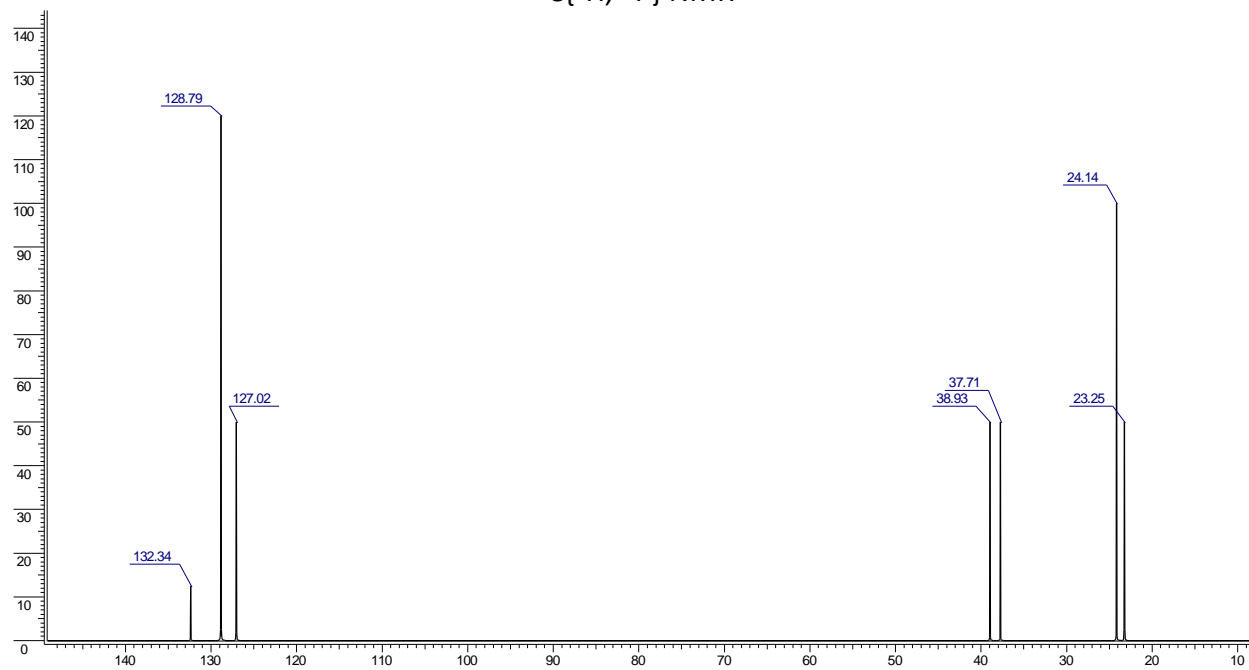


MS (m/z): [M]<sup>+</sup> 212(100%), [M+1]<sup>+</sup> 213(12.2%), [M+2]<sup>+</sup> 214(1%)  
IR (cm<sup>-1</sup>): 3628(s,br), 3038(m), 2960(m,br), 1280(s)

### <sup>1</sup>H NMR



### <sup>13</sup>C{<sup>1</sup>H, <sup>31</sup>P} NMR



<sup>31</sup>P{<sup>1</sup>H} δ: 36(s)