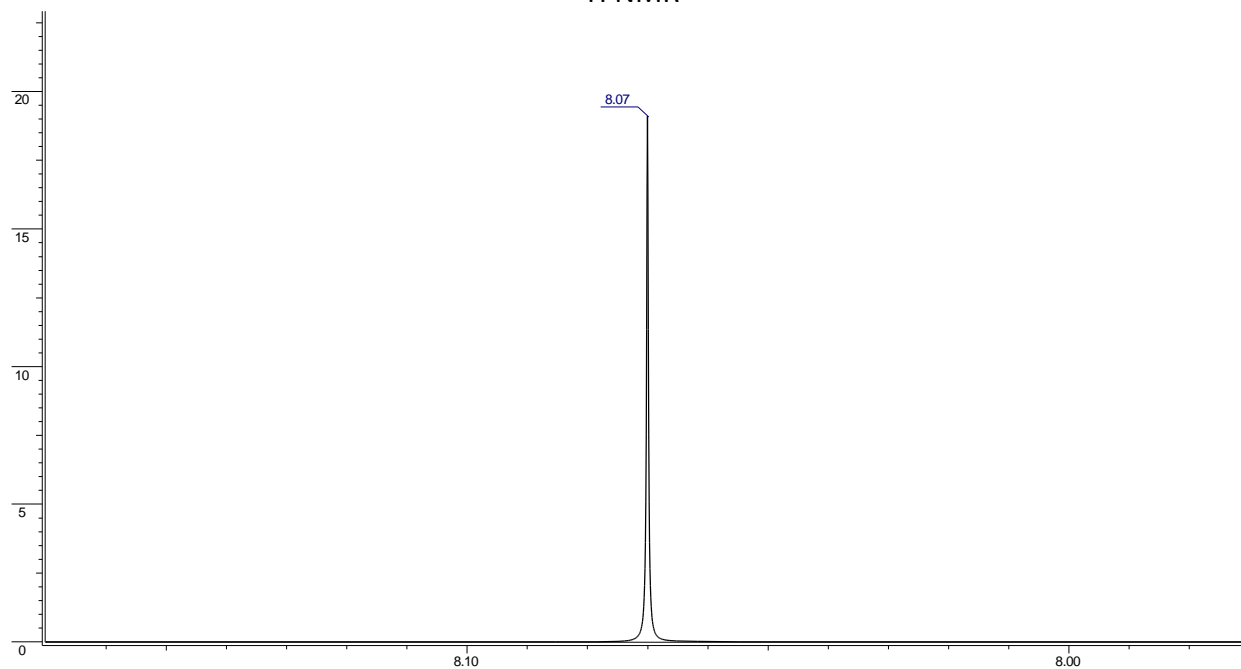


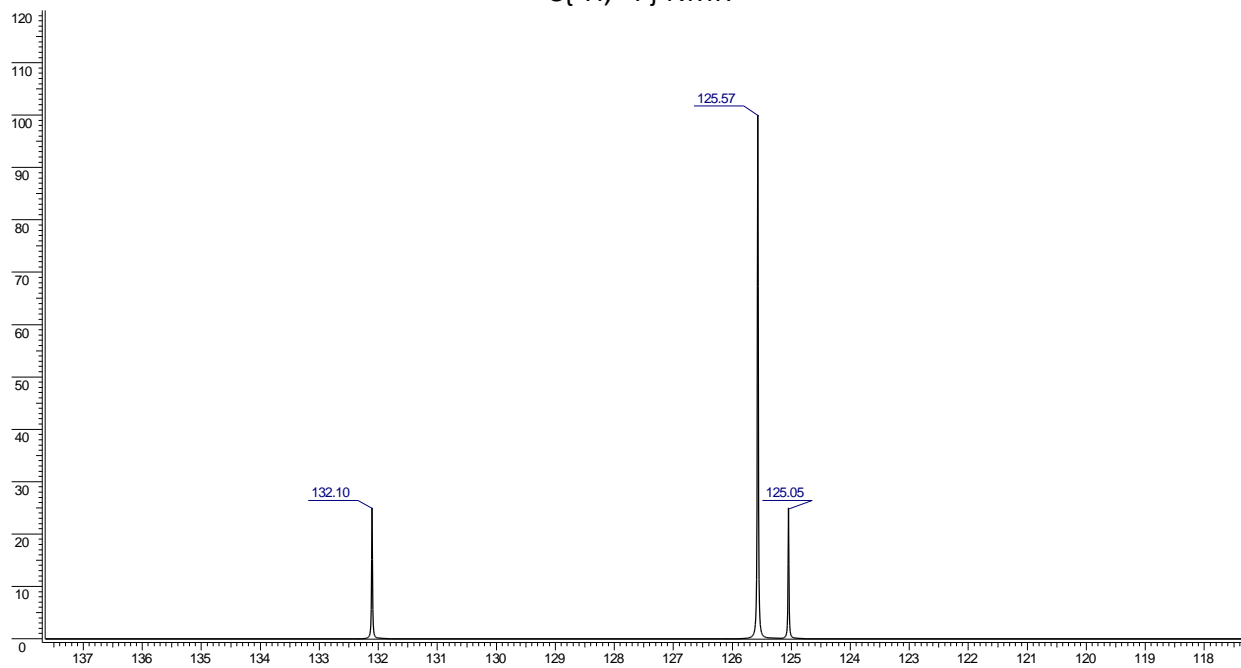
MS (m/z): [M]<sup>+</sup> 282(100%), [M+1]<sup>+</sup> 283(9.7%)

IR (cm<sup>-1</sup>): 3062(m), 1374(vs), 1314(vs), 1265(vs), 1238(vs), 1170(vs)

### <sup>1</sup>H NMR



### <sup>13</sup>C{<sup>1</sup>H, <sup>19</sup>F} NMR



<sup>19</sup>F{<sup>1</sup>H} δ: -61(s)