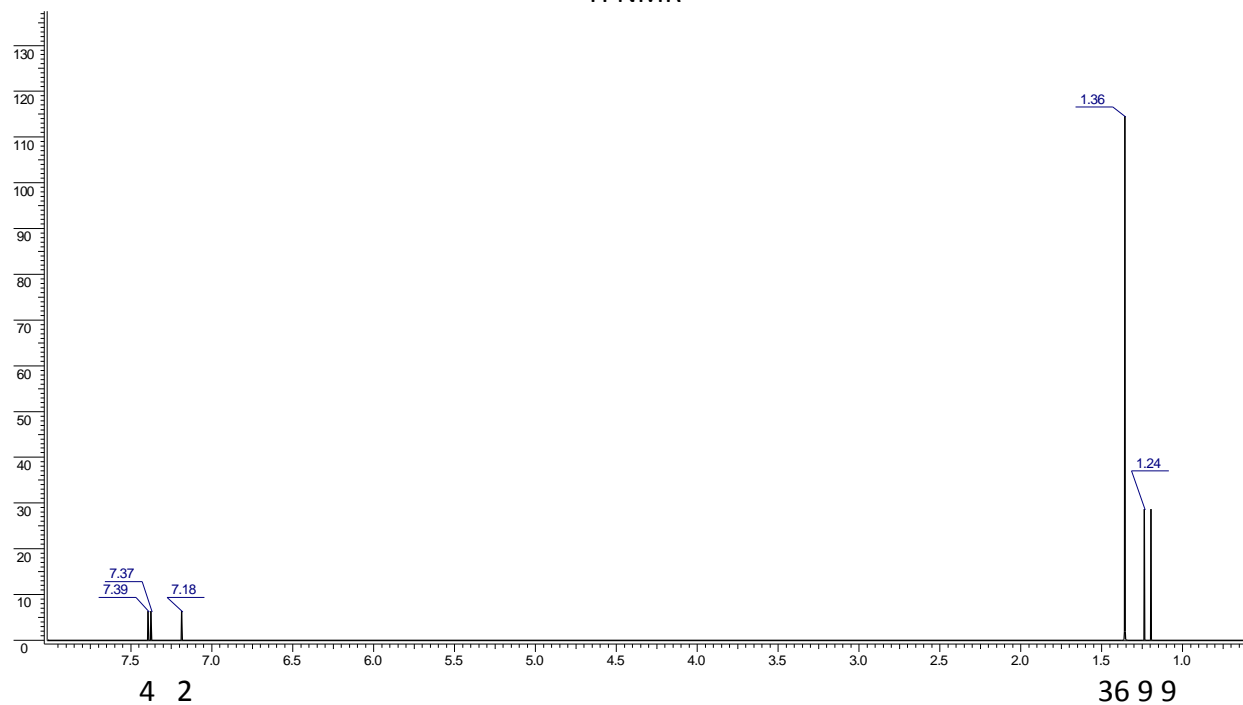
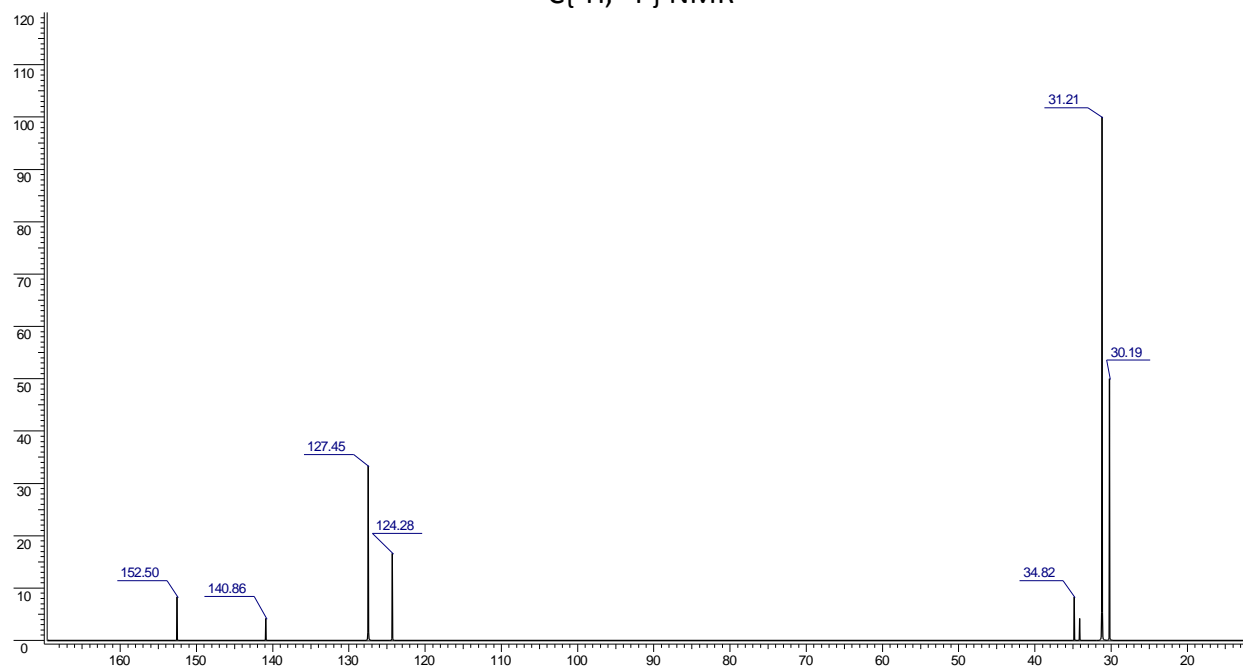


MS (m/z): [M]⁺ 308(100%), [M+1]⁺ 309(19.9%), [M+2]⁺ 310(1.9%)
IR (cm⁻¹): 3030(m), 2955(m,br)

¹H NMR



¹³C{¹H, ³¹P} NMR



³¹P{¹H} δ: 491(s, 1P), 539(s, 1P)