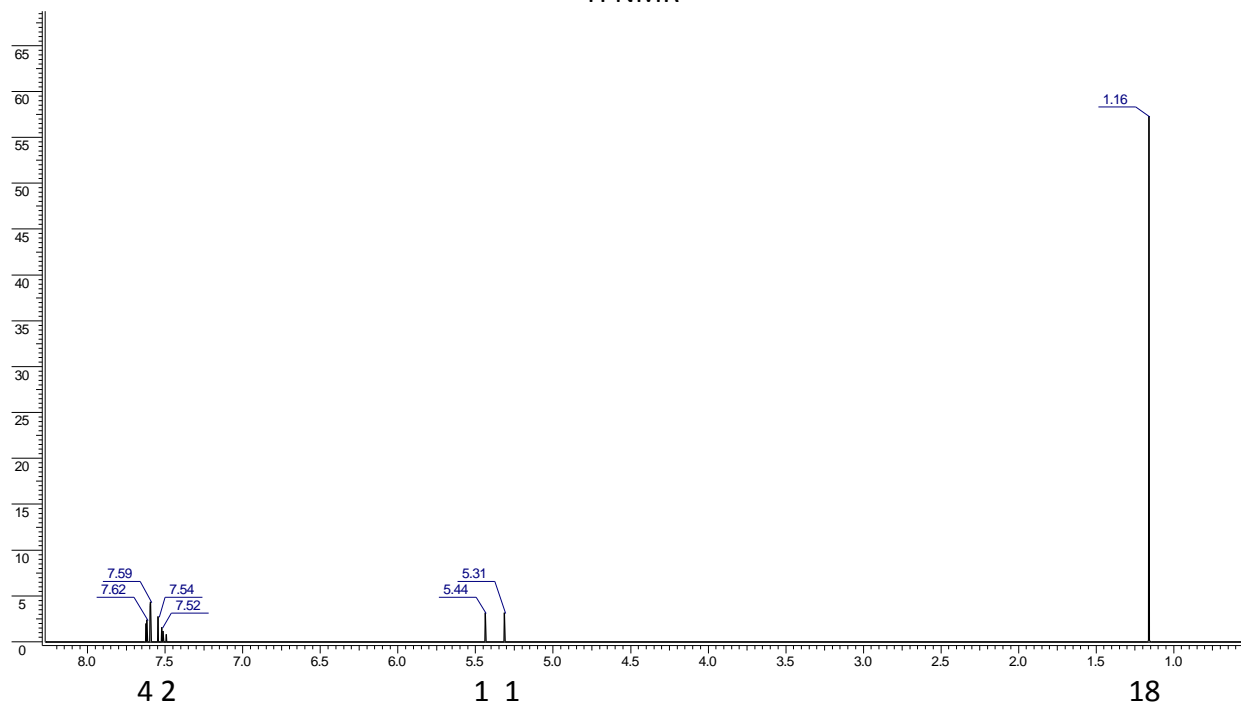
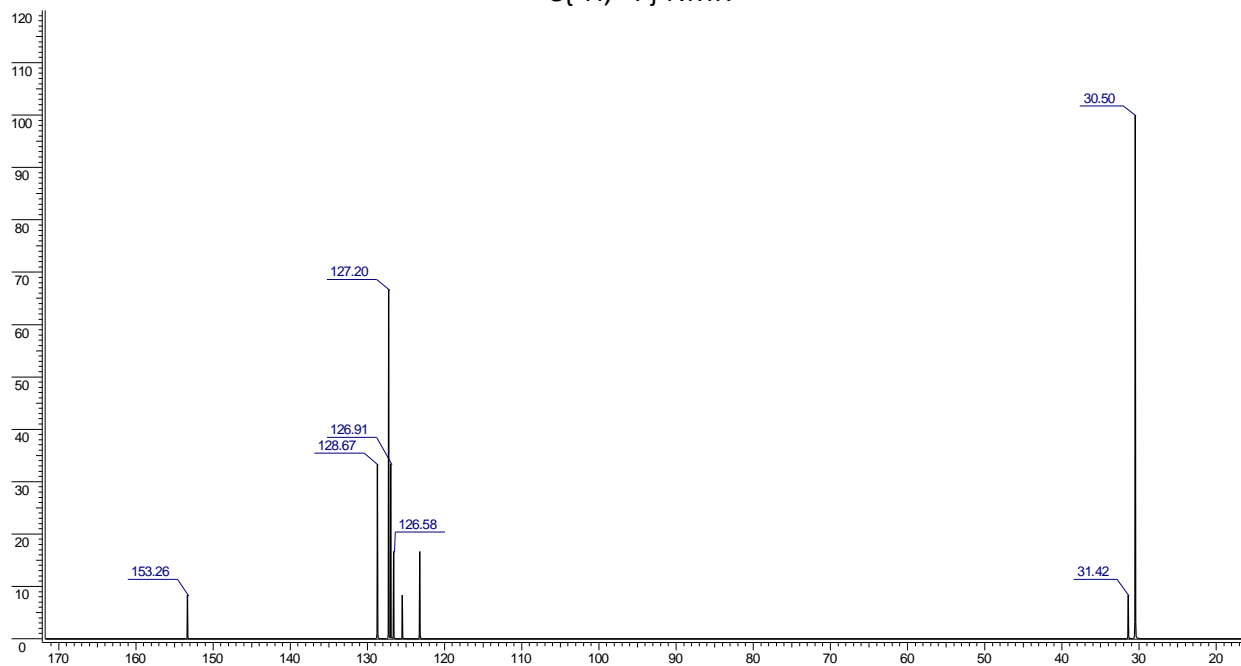


MS (m/z): [M]⁺ 314(100%), [M+1]⁺ 315(15.4%), [M+2]⁺ 316(1.1%)
IR (cm⁻¹): 3005(m), 2990(m), 2960(m,br), 1050(vs), 1220(vs)

¹H NMR



¹³C{¹H, ¹⁹F} NMR



¹⁹F{¹H} δ: -122(s, 1F), -60(s, 6F)