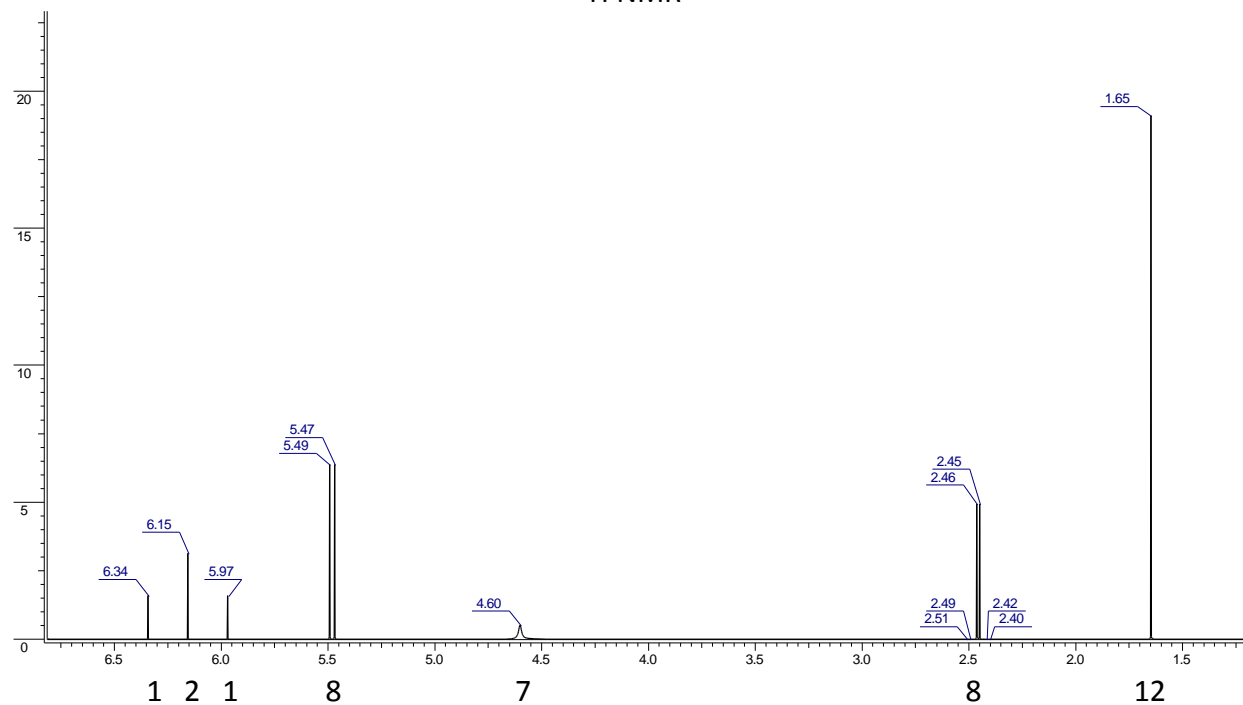
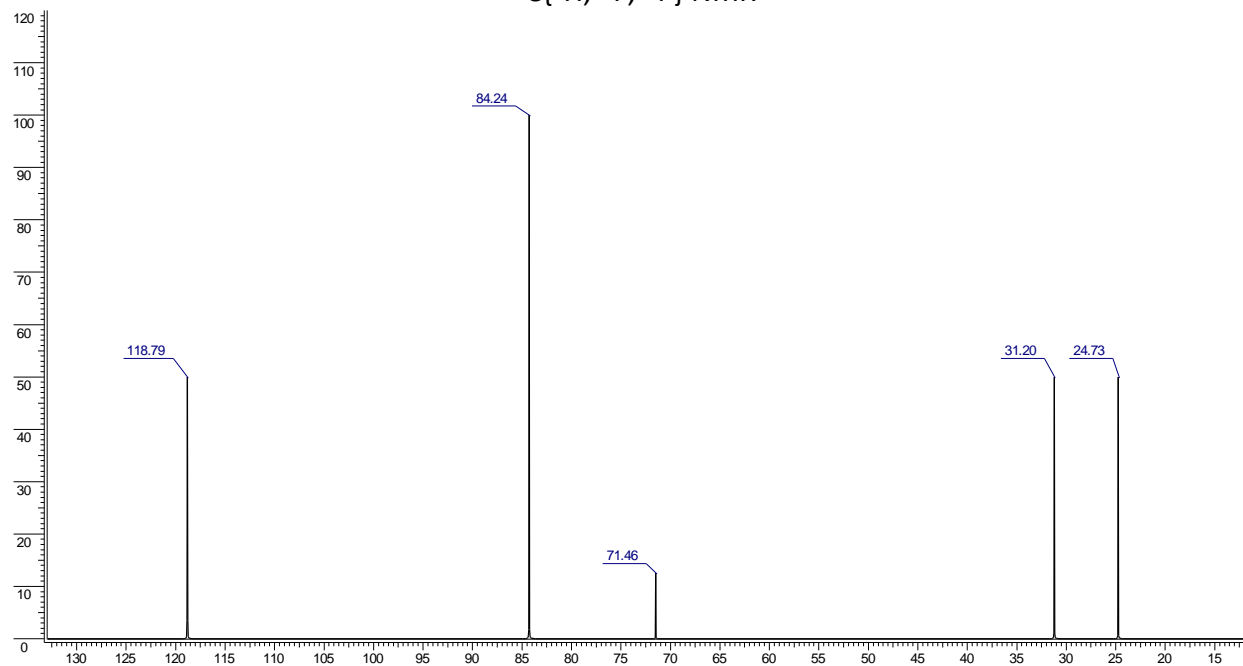


MS (m/z): [M]⁺ 252(100%), [M+1]⁺ 253(6.8%), [M+2]⁺ 254(33.4%), [M+3]⁺ 255(2.3%)
IR (cm⁻¹): 3633(s), 2955(m), 1105(vs), 698(m)

¹H NMR



¹³C{¹H, ¹⁹F, ³¹P} NMR



¹⁹F{¹H, ³¹P} δ: -24

³¹P{¹H, ¹⁹F} δ: -123